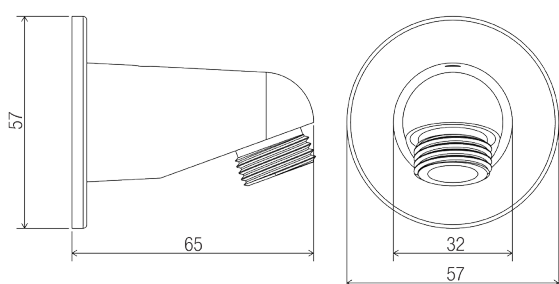


PRODUCT INFORMATION

DIMENSIONS



LIMITED PROJECTION ARM

Product Code - Finish

- SA 005 C/12 - Chrome

Features

- 55 mm x 20° fixed shower arm
- Brass construction
- Brass 57 mm wall flange
- 12 L/min flow INTERCHANGE® spigot
- ½" BSP female inlet with ½" BSP male threaded outlets
- Chrome plated finish
- OTHER FLOW RATES AVAILABLE

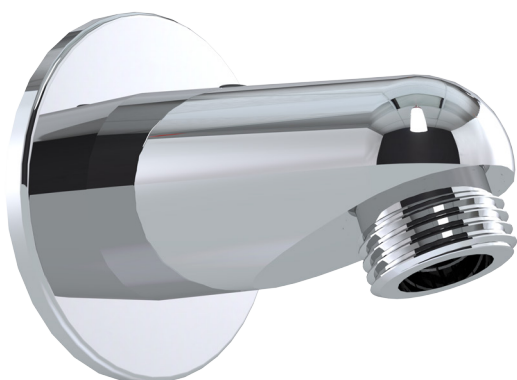
Compliance

- Not required for sale

Warranty

See Con-Serv warranty policy for full details.

INDICATIVE IMAGE



CON-SERV CORPORATION AUSTRALIA PTY. LTD.

17 Glentanna Street, Kedron · Qld. 4031 Australia

Phone: +61 (0)7 3630 5744 · Fax: +61 (0)7 3630 5755 · Email: mail@con-serv.com.au · www.con-serv.com.au